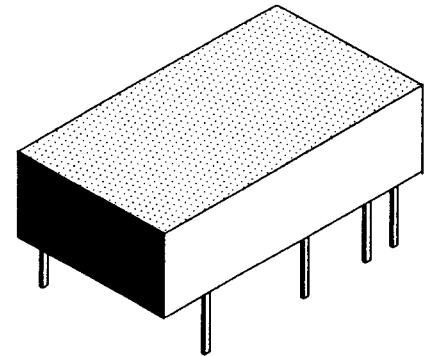




**AYA-SERIES**  
**AZA-SERIES**

MILITARY GRADE, 14 PIN, 5 TAP TTL ACTIVES

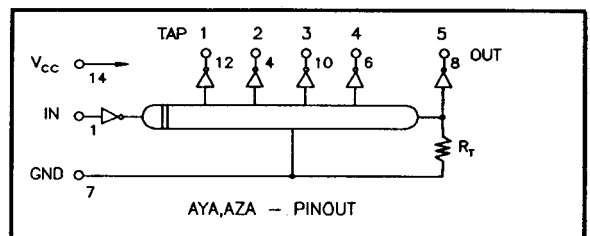
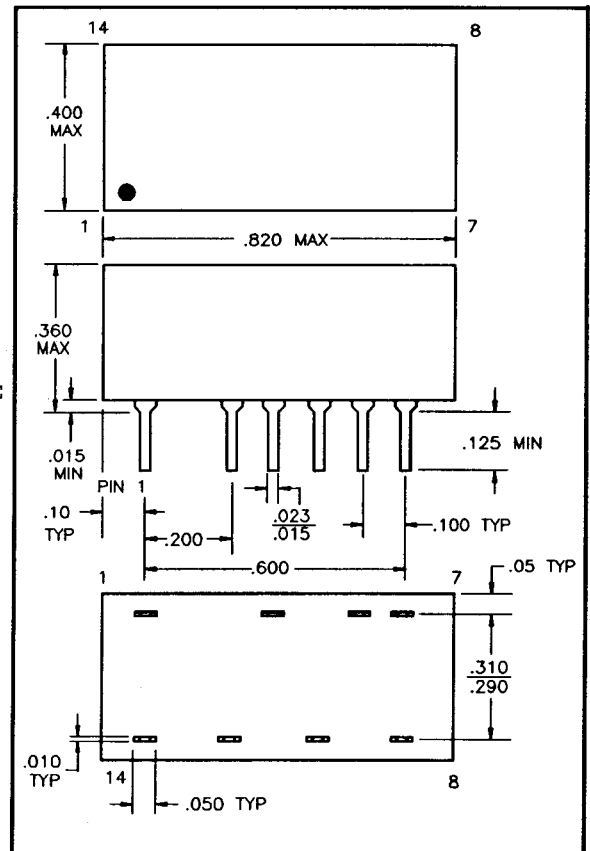


DC Electrical Characteristics		Test Conditions	Min	Max	Unit
Parameter					
V <sub>OH</sub>	High-Level Output Voltage	V <sub>CC</sub> =min. V <sub>IL</sub> =max. I <sub>OH</sub> =max.	2.7		V
V <sub>OL</sub>	Low Level Output Voltage	V <sub>CC</sub> =min. V <sub>IH</sub> =min. I <sub>OL</sub> =max.		0.5	V
V <sub>IK</sub>	Input Clamp Voltage	V <sub>CC</sub> =min. I <sub>I</sub> =-18mA		-1.2	V
I <sub>IH</sub>	High-Level Input Current	V <sub>CC</sub> =max. V <sub>IN</sub> =2.7V		50	uA
I <sub>IL</sub>	Low-Level Input Current	V <sub>CC</sub> =max. V <sub>IN</sub> =5.25V		1.0	mA
I <sub>OS</sub>	Short Circuit Output Current	V <sub>CC</sub> =max. V <sub>IN</sub> =0.5V	-40	-100	mA
I <sub>CCH</sub>	High-Level Supply Current	V <sub>CC</sub> =max. V <sub>OUT</sub> =0 (One output at a time)		45	mA
I <sub>CCL</sub>	Low-Level Supply Current	V <sub>CC</sub> =max. V <sub>IN</sub> =OPEN		90	mA
T <sub>RO</sub>	Output Rise Time	T <sub>d</sub> ≤ 500nS (0.75 to 2.4 Volts) T <sub>d</sub> > 500nS		4 5	nS
N <sub>H</sub>	Fanout High-Level Output	V <sub>CC</sub> =max. V <sub>OH</sub> =2.7V		20	TTL LOAD
N <sub>L</sub>	Fanout Low-Level Output	V <sub>CC</sub> =max. V <sub>OH</sub> =0.5V		10	TTL LOAD

Recommended Operating Conditions				
Parameter	Min	Max	Unit	
V <sub>CC</sub>	4.75	5.25	V	
V <sub>IH</sub>	2.0		V	
V <sub>IL</sub>		0.8	V	
I <sub>OH</sub>		-1.0	mA	
I <sub>OL</sub>		20	mA	
PW	40		%	
T <sub>A</sub>	-55	+125	°C	

**NOTE: THE AZA-SERIES IS A HIGH PERFORMANCE DESIGN AND CAN ACCOMMODATE A 20% MINIMUM PULSE WIDTH. ALSO COMPLIES WITH DESC SPEC. 84087.**

Input Pulse Test Conditions @ 25°C			
Parameter	Min	Max	Unit
E <sub>IN</sub>		3.2	Volts
PW		110	%
T <sub>RI</sub>		2.0	nS
PRR		1.0	MHz
		100	KHz
V <sub>CC</sub>		5.0	Volts



TOTAL DELAY ± 2 nS OR 5%	TAP DELAYS ± 2 nS OR 5%	POLARA P/N AYA - PINOUT	POLARA P/N AZA - PINOUT
25	5	AYA-0025	AZA-0025
50	10	AYA-0050	AZA-0050
100	20	AYA-0100	AZA-0100
150	30	AYA-0150	AZA-0150
200	40	AYA-0200	AZA-0200
250	50	AYA-0250	AZA-0250
500	100	AYA-0500	AZA-0500

ANY VALUES NOT SHOWN, AVAILABLE UPON REQUEST.